

### ● Composite Panel Specification

Item	SUS304-GI		Unit: mm			
Thickness	2.0		2.5		3.0	
Material Size	1100*1100	1100*600	1100*1100	1100*600	1100*1100	1100*600
Panel Size	1000*1000	1000*500	1000*1000	1000*500	1000*1000	1000*500
Thickness	3.5		4.0		4.5	
Material Size	1100*1100	1100*600	1100*1100	1100*600	1100*1100	1100*600
Panel Size	1000*1000	1000*500	1000*1000	1000*500	1000*1000	1000*500
Note: Size can be customized						

### ● Comparision of CGS water tank and other water tank

SS welded water tank	BDF sectional water tank	CGS composite sectional water tank
Features: 1、Moulded Panel,need welding work at site 2、Corrosion of the welding part. 3、Expensive and short service life.	Features: 1、SS panel and GI panel moulded individually,and set together ,installed with bolts connection. 2、Need to weld the four corners,some of the welding part will contact with water, the welding part will rust.	Features: 1、SS304+GI bimetal composite panel,one time moulded,good strength and life long.Bolts connection. 2、No need any welding,no leaking and corrosion risk. 3、Lower cost than BDF.

### ● Seal、Leaking stoppage、Seal Ring

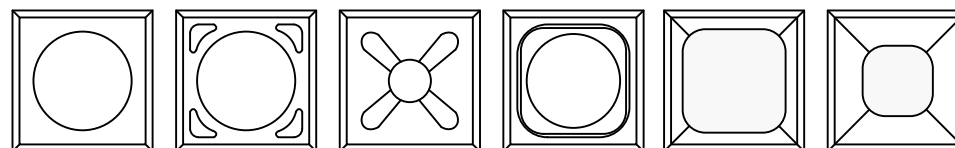


### ● Ribs and Bolts



## FoShan KunLiuSheng Composite Material Co.,Ltd

### CGS Sectional Water Tank Composite Panel (SUS+GI)



Add: No. 27-33, 2/F/B5, LanShi Metal Center, Chancheng District, Foshan City, Guangdong Province, china 528000

Tel: 0757-83836678, Fax: 0757-83838678

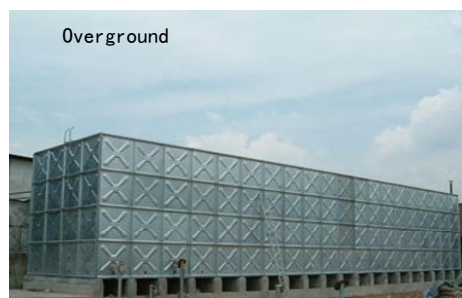
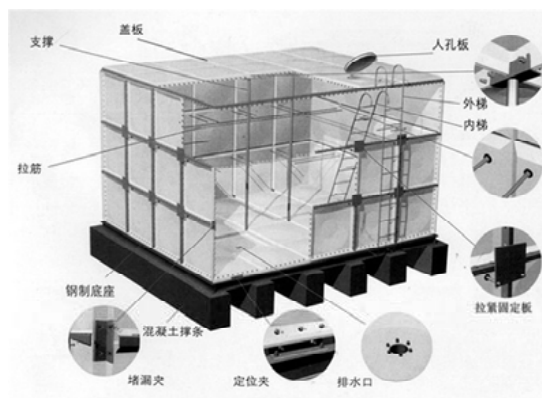
Website: [www.klscladmetal.com](http://www.klscladmetal.com) E-Mail: [carson@klsfh.com](mailto:carson@klsfh.com)



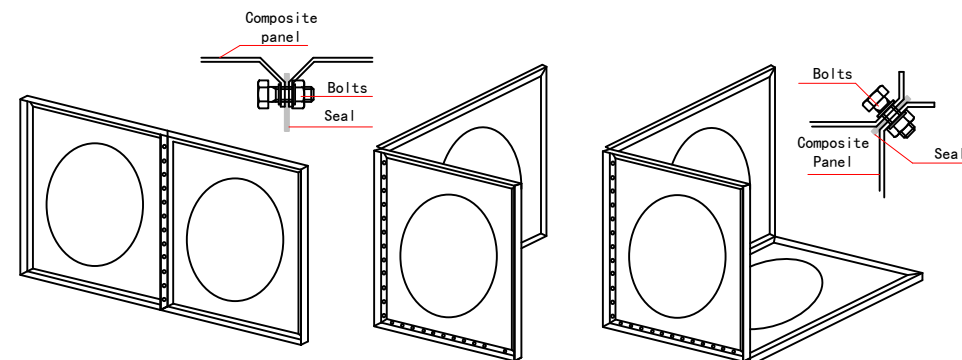
● CGS Water Tank Composite Panel

CGS Water Tank Composite Panel is made of SS304/SS316+GI bimetal composite panel moulded to shape of sectional water tank panel in size 1m<sup>2</sup>、0.5m<sup>2</sup>、0.25m<sup>2</sup>.The whole tank is connected by high strength bolts and non-toxic food grade silicon sealing material,it can not only avoid the intergranular corrosion occur in welding process,but also avoid the leaking risk of the welding pot,making the whole tank strong and safe.The SS material ensure the hygiene of the water quality and the GI ensure the the mechanical strength of the whole tank.The composite panel is the perfect material for sectional water tank that you can ever use.

CGS Sectional water tank can be used overground,underground and above the roof.Comparing with the difficult knock down and can not be re-used of the traditional pure stainless steel welded water tank, the CGS sectional water tank is easy to install and the knock down modules can be reused.The CGS sectional tanks offers a upgrade of quality and most important is it can help to down the cost 40%~60% comparing with SS water tank.

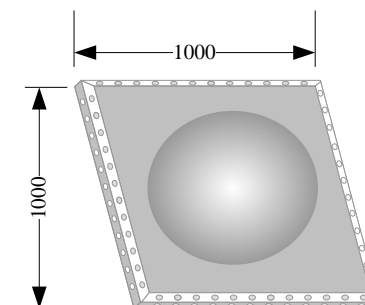
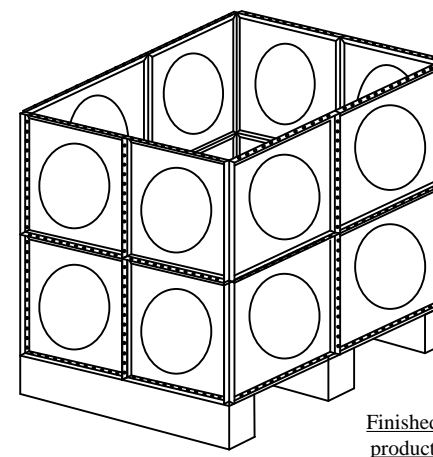


● CGS Sectional Water Tank Installation Guideline

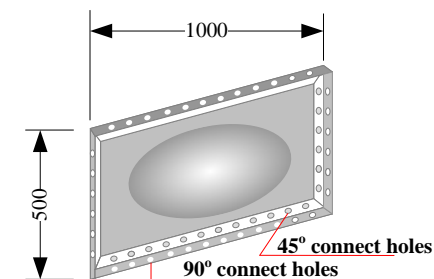


Flat Joint

Corner Joint



1000\*1000mm Modules Panel



1000\*500mm Modules Panel